

Annual Report 2023

MILANG AND DISTRICT COMMUNITY ASSOCIATION INC.

ABN: 69 623 040 557

MILANG & DISTRICT COMMUNITY ASSOCIATION INC.



Celebrating MOSHCC
2003 -2023



*Yunti Ngopun Ngami ; Together We Walk
Artwork by Allan Sumner*

We acknowledge the Ngarrindjeri people on whose land we meet and we pay our respects to the Elders past and present.

Ngarrindjeri Vision for Country: Kungun Ngarrindjeri Yunnan (Listen to what Ngarrindjeri people have to say)

“Our Lands, Our Waters, Our People, All Living Things are connected. We implore people to respect our Ruwe (Country) as it was created in the Kaldowinyeri (the Creation). We long for sparkling, clean waters, healthy land and people and all living things. We long for the Yarlumar-Ruwe (Sea Country) of our ancestors. Our vision is all people Caring, Sharing, Knowing and Respecting the lands, the waters and all living things.” - From Ngarrindjeri Nation Yarlumar-ruwe plan 2006

Strategic Plan

OUR VISION

Healthy Communities Sustainable Habitats

We Value:

- Honesty and Fairness
- Teamwork, Mutual Respect and Diversity
- Reliability and Responsibility
- Ethical Service Provision and Commitment to Quality
- Care for the People and the Environment
- Equality and Inclusivity

Our Purpose:

- Foster the importance of social diversity, community spirit and community relationships
- Value and protect the peace and natural beauty of our environment
- Acknowledging the Ngarrindjeri people as the spiritual custodians of this land
- Ensuring that local communities are listened to and are actively involved in decision making that will affect them
- To respond to both individual and community needs
- Building capacity by empowering groups and fostering resilience
- Provide services and activities which meet those needs
- Adopt and promote ecological sustainability
- Commit to working together to achieve goals



MADCA

MANAGEMENT COMMITTEE

President: John Whyte Don McInness

Vice President: Gordy
Rollins Cathy Fish

Treasurer: Mike
Linscott Chris Francis

Secretary: Raymond
Perry Richard Prusa

Gill Berry
Vivienne Maher

Ex Officio Members:

Stuart Jones, MADCA Manager

STAFF

Stuart Jones, MADCA Manager

Colleen Whyte, GLC Program Manager

Gordy Rollins, MOSHCC Admin Assistant

Vivienne Maher, GLC Liaison Officer & Volunteer Coordinator

Cheryl Norton, Finance Officer

Britteny Fleming, Cathy Ward, Samantha Stratton, Helen Koufos -
Casual Child Care

Annie Whyte, Lakes Home Care Coordinator

Gill Berry & Cath McKenny, Registered Nurses, Lakes Home Care

Prue Turner, Lakes Home Care Admin

Ray Perry, Lakes Home Care Admin

Craig Gully, CHSP Coordinator

Cameron Davidson, Grounds

PRESIDENT'S REPORT

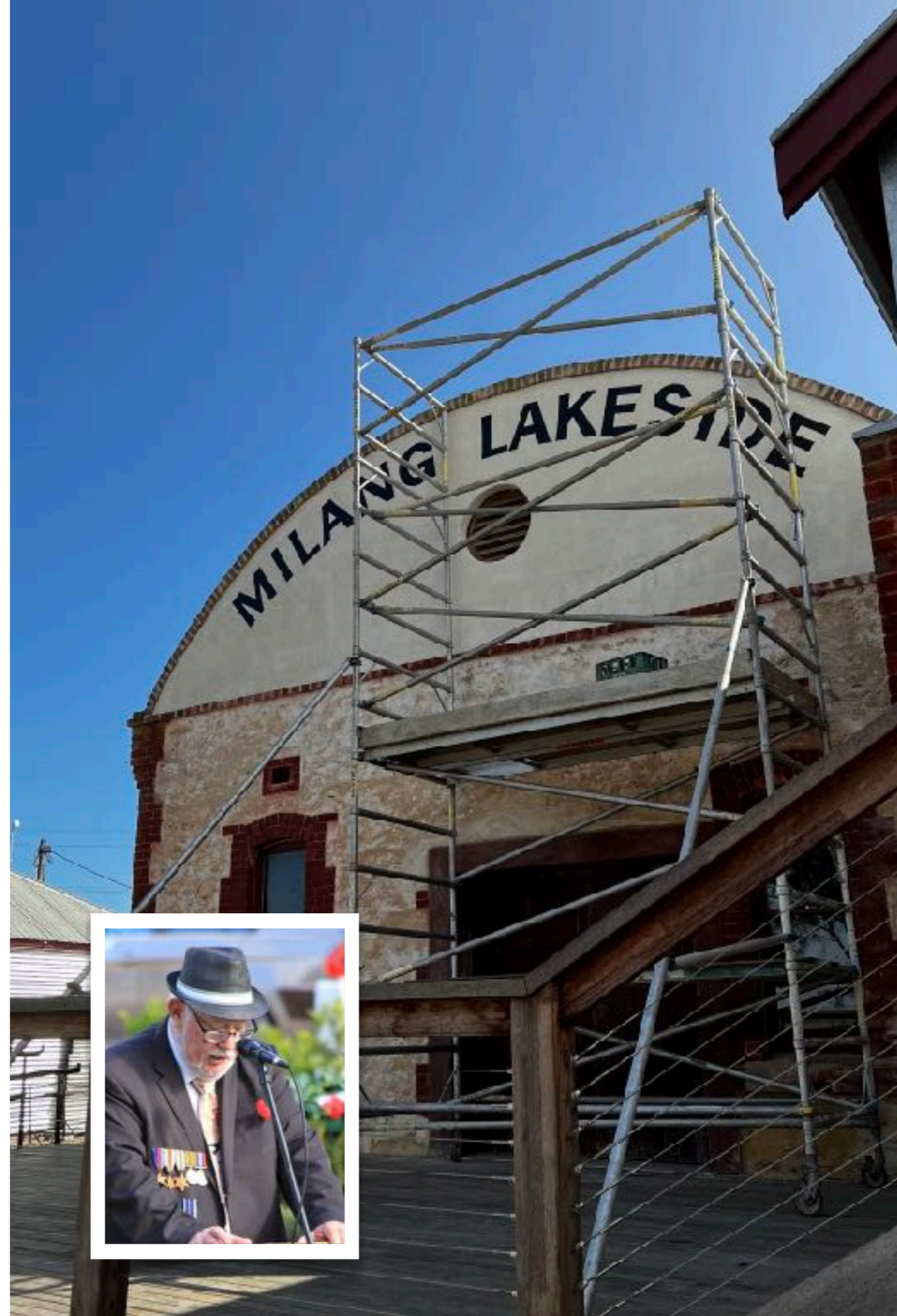
John Whyte

2022/23 Has been extremely busy year for MADCA. I would acknowledge our manager Stuart Jones who has worked under extreme pressure this year. Stuart has been responsible for our financial management and seen MADCA Inc. through a time of extensive growth that has seen Lakes Home Care almost double in size. Few people know how hard it is to undertake the financial control including a growing payroll, and other recording and reporting. Thank you, Stuart.

The good news is we have just appointed a Finance Officer Cheryl Norton who has many years' experiences in banking and finance management. She is very accomplished and will assist in reducing the additional workload Stuart took on.

Lakes Home Care has seen substantial growth providing services for our older residents of Milang and districts, as well as increasing their vehicles from two to four, to provide transport to clients for medical appointments and the like.

Our Child Care section has also significantly grown and a big thank you to Britteny and her team for her dedicated attention, care, and wellbeing.



MADCA Inc. has joined a partnership between Alexandrina Council, Reclink Australia and MOSHCC, with some funding from the Alcohol and Drug Foundation, to establish a Youth Activities Centre in the old Regatta Club House, now known as the Youth Hub. We will need to apply for funding to carry out some restoration of the Youth Hub, which I believe we can successfully achieve.

Growing Life Connections is about to undergo some changes thanks to a change in funding through the Department of Human Services. Coleen White who has overseen GLC for the last seven years will be retiring in August. I thank her for her dedication to GLC and the excellent work in our community.

As result of changes to funding by Department of Human Services, Stuart will be developing new activities at MOSHCC. This will include restructuring the GLC sector.

A major project the restoration of the Milang Historical Butter Factory is well under way and the site is extremely busy with tradies transforming the building. You can now see new galvanised iron sheets being fitted to the settler's cottage and the inside being transformed into new office space for MADCA. Our Butter Factory committee now has a huge job to plan and organise how we are going to attract visitors to Milang and operate this great asset for Milang.

I would like to thank all the volunteers who have dedicated so many hours to transform the Butter Factory under the leadership of John Bradford who has thought outside of the square to reduce cost to make our grant money go as far as possible. I would also like to thank all tradies who have reduced their charges to save money on

the restoration. I commend the great community spirit that has been created on the Butter Factory restoration.

Last, I would like to thank my dedicated management committee. We have had our share of challenging decisions to work through but feel we have all worked collectively to determine the most optimum way forward.

As I look to the future, I am excited about the future for MADCA, and look forward to seeing the opening of the Butter Factory & what it brings to the community.

I once again thank all our staff, & volunteers they are certainly the backbone of our whole operation.

John Whyte

President MADCA Inc.

MANAGER'S REPORT

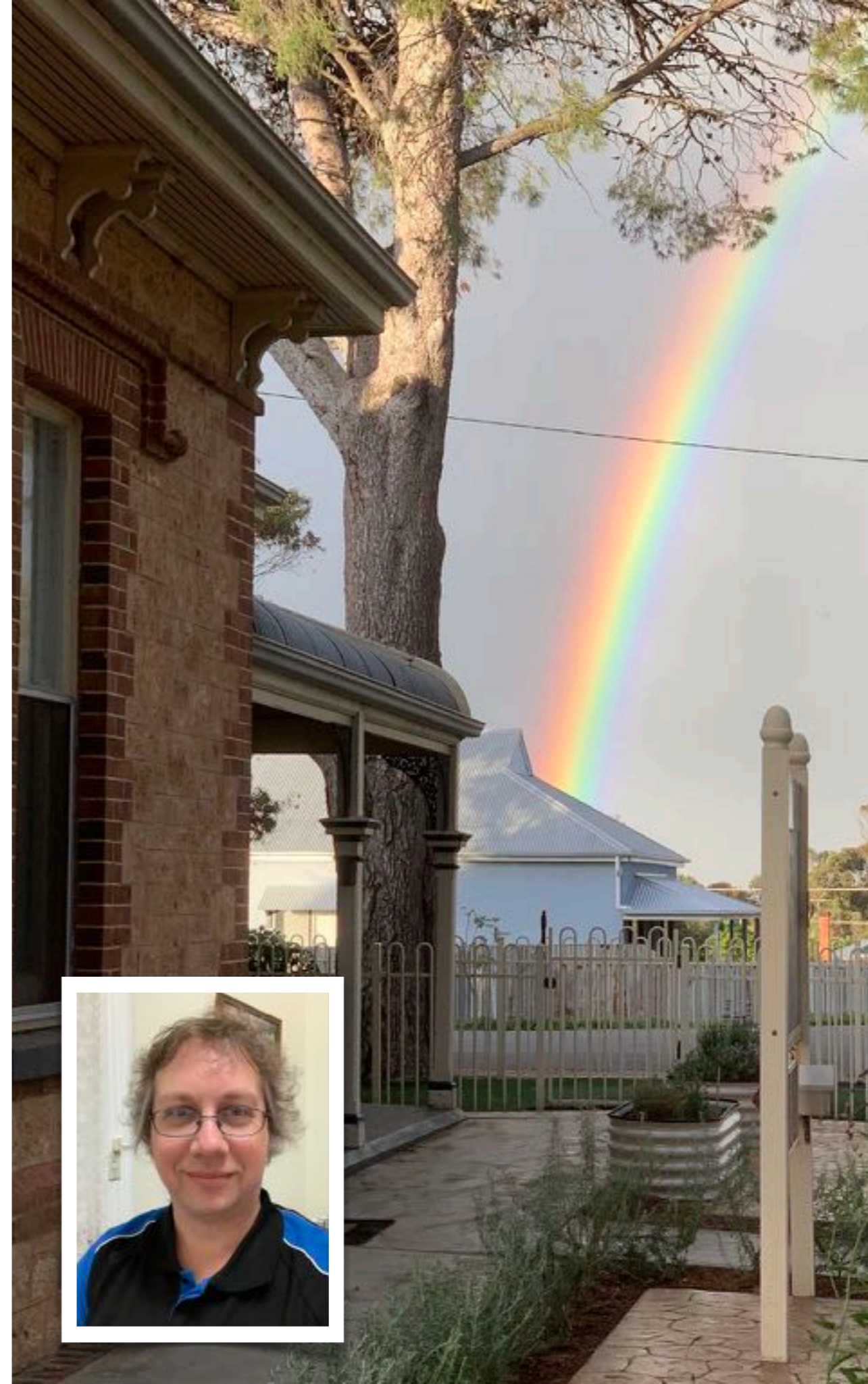
Stuart Jones, MADCA Manager

This year our Association has achieved some great outcomes, through the hard work of our volunteers and staff.

The Butter Factory continues to steam ahead with our restoration of the buildings for community use. There are so many great ideas about how we can use the space, and our recent survey provides the steering committee and myself with valuable information (for the most part... no, we are not going to sell it...) to move forward into the next phase of opening the facility.

Like opening any new space, it may be that things evolve over time, and we might trial various things. But the big important thing is that we maintain our core values and our mission. Anything we do, especially if it generates revenue, is to further our support of the community. I've been attending the Inspired Leadership program running in the Fleurieu and Adelaide Hills, and in a session on finance, the speaker remarked that we should not think "Not for profit" but to think "Profit for purpose".

Money does not measure our success, but the financial health of our organisation means we can continue to operate, pay our staff,



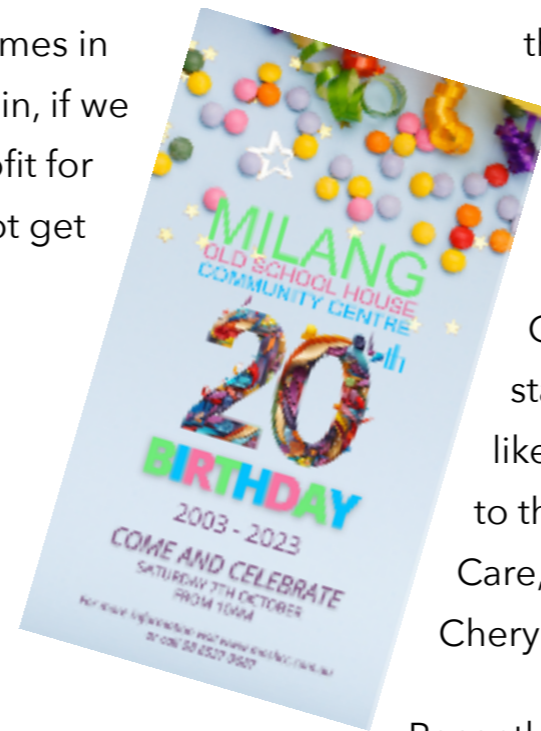
and pay our suppliers etc. Much of our income now comes in arrears, which does make things more difficult, but again, if we can remain healthy financially, and generate some "profit for purpose" we can continue to offer things that we do not get funding for.

This year our surplus, along with donations received, have supported a number of community programs, including the Youth Hub, with set up and maintenance of the building and the payment of some additional funds to ReLink to extend the time for the youth worker.

We also continue to provide our Emergency Relief pantry, and transport support for community members and families in need. Over 65's can access transport through us via My Aged Care funds, however under 65 we will support local people who need transport

assistance. Many thanks also to our volunteer drivers who support this, and to Milang Auto Repairs who support our process for providing fuel vouchers in certain circumstances.

This year we have also contracted a counsellor, not provided for in any government grant contracts, but because there is a need in



the community and with the changes in our DHS funding, and Colleen's retirement we don't have that person on staff anymore. This provides a few hours a week for local clients who may need support.

Our staff numbers have grown again and we have 34 staff ranging from full time, part-time and casual. I would like to thank all staff for their work and, welcome those new to the team. We have some new trainees in Lakes Home Care, Traci and Denise and also our new Finance Officer, Cheryl.

Recently MOSHCC had the pleasure to be able to host the Adelaide Symphony Orchestra, one of their free Community Centre performances, a first trip for them to Milang, and everyone had a great time, listening to the great mix of styles. The sound from the orchestra filled the Institute beautifully, and one could tell the hall was built for it.

Last but not least, this year sees the Milang Old School House Community Centre celebrate it's 20th Birthday! Please come along to our celebration of all things past, present and future for your Centre. Celebrations will be held on the 7th of October from 10am... more info soon, but just a little tip... start practicing your scone making!



MILANG LAKESIDE BUTTER FACTORY

Mike Galea, Project Manager

Project Manager

The Butter Factory is progressing on target for completion by the end of September 2023.

I have been regularly reporting to the MADCA Project Committee. It is rewarding to be part of a dedicated and proactive team.

Since the last report to a MADCA Special Meeting, many items of works have been undertaken in line with my works schedule. With a heritage project like this, there have also been countless little unexpected jobs that needed doing. These have impacted on the project costs. To assist in minimising this, we have made some project changes which have provided us with significant savings.

As an update on most of the major tasks, I provide the following:

- Grant reports to the Federal Government completed for each milestone
- BF Toilets extension 95% complete
- BF second fix works 90% complete





- New septic tank and grease arrester complete
- Electrical works first fix 90% complete, and second fix 80% complete
- Painting and many other jobs are either in progress or have been completed by our volunteers
- Cabinet making for new commercial kitchen complete
- New oven, dishwasher and under-island bench fridge on site and ready for installation
- New Kitchen stainless-steel benches on site and to be erected
- External wall cladding replacement to the cottage complete
- Cottage toilets, kitchen and gas plumbing first fix complete, with second fix in progress
- Cottage timber floor bearers and joists made plumb and stumps repaired or replaced
- New dome shaped verandah from Stratco installed at rear of cottage
- New timber windows and doors for cottage installed
- Internal cottage framework and floor surface remedial works 90% complete
- New plumbing for the cottage toilets and kitchen 90% complete
- New Cottage air-conditioning first fix plumbing and electrical complete, to be installed and commissioned 13th September
- Cottage new ceiling insulation ordered, to be fitted 22nd September
- Cottage external wall and lean-to roof insulation complete
- Cottage Lean-to roofing timber repairs 95% complete, roof sheets replaced
- New complex WiFi systems between Butter Factory and MOSH complete
- New floor coverings for the cottage ready for installation, awaiting completion of painting

- Norm has continued with his stone path and concreting in addition to internal wall surface sealing where necessary and is doing an amazing job
- Cottage front window refurbishment in progress
- Materials for new Bull-nose verandahs and posts at the cottage on site and ready for construction
- New gravel surface carpark works to start next week
- Rear carpark redesigned to retain a tree (thanks to the tree hugging efforts of JB)
- Signwriting over the front of the dome facing Daranda Tce nearing completion
- Internal painting for Butter Factory 80% complete
- Butter Factory second fix 95% complete
- Completion of external concrete paving in progress
- Car Park retaining walls planned for commencement next week
- Butter Factory replacement basement stairs being re-quoted

Meetings with BF Project Committee consistently overview expenditure vs income. We are slightly over budget and wherever savings can be made, we are making them.

We have maintained an excellent relationship with the State Heritage Officer which has assisted us gain approval on modifications as the project has evolved.

JB and his team of volunteers have been doing an outstanding job. Their amazing efforts should be applauded. Their work has saved the MADCA between \$150,000 to \$180,000. There is still much to

be done by the end of the month, so any assistance JB can get, is really appreciated.

We have been using local contractors and suppliers for the majority of the works which helps in the overall community ownership of the project. Michael Tobin from the Nine Mile Rd and his team of carpenters have done above and beyond so far. Everyone including the MADCA Building Committee have been working together as an effective team.

The administrative support from Stuart Jones and Annie Whyte together with the support and direction from John Whyte, Mike Linscott, Karen Bradford, Chris and Susan Bagley has been invaluable, allowing the project to maintain a steady pace during these extremely challenging times with a severe lack of available trades and building materials.



ACTIVITIES AT MOSHCC

Some of the activities at Milang Old School House Community Centre:

- Fibre Art
- One-to-one computing
- Community Garden
- Ukulele
- Keep Fit
- Cards
- Stepping On, strength and balance program
- Childcare, 2 mornings a week
- Friday Feast
- WOW women's group
- Yoga
- Tai Chi
- Milang Mermaids
- Community Transport
- Emergency Relief
- Mental Health First Aid
- Safe Environments for Children and Young People
- Wellbeing Workshops
- Grief and Loss

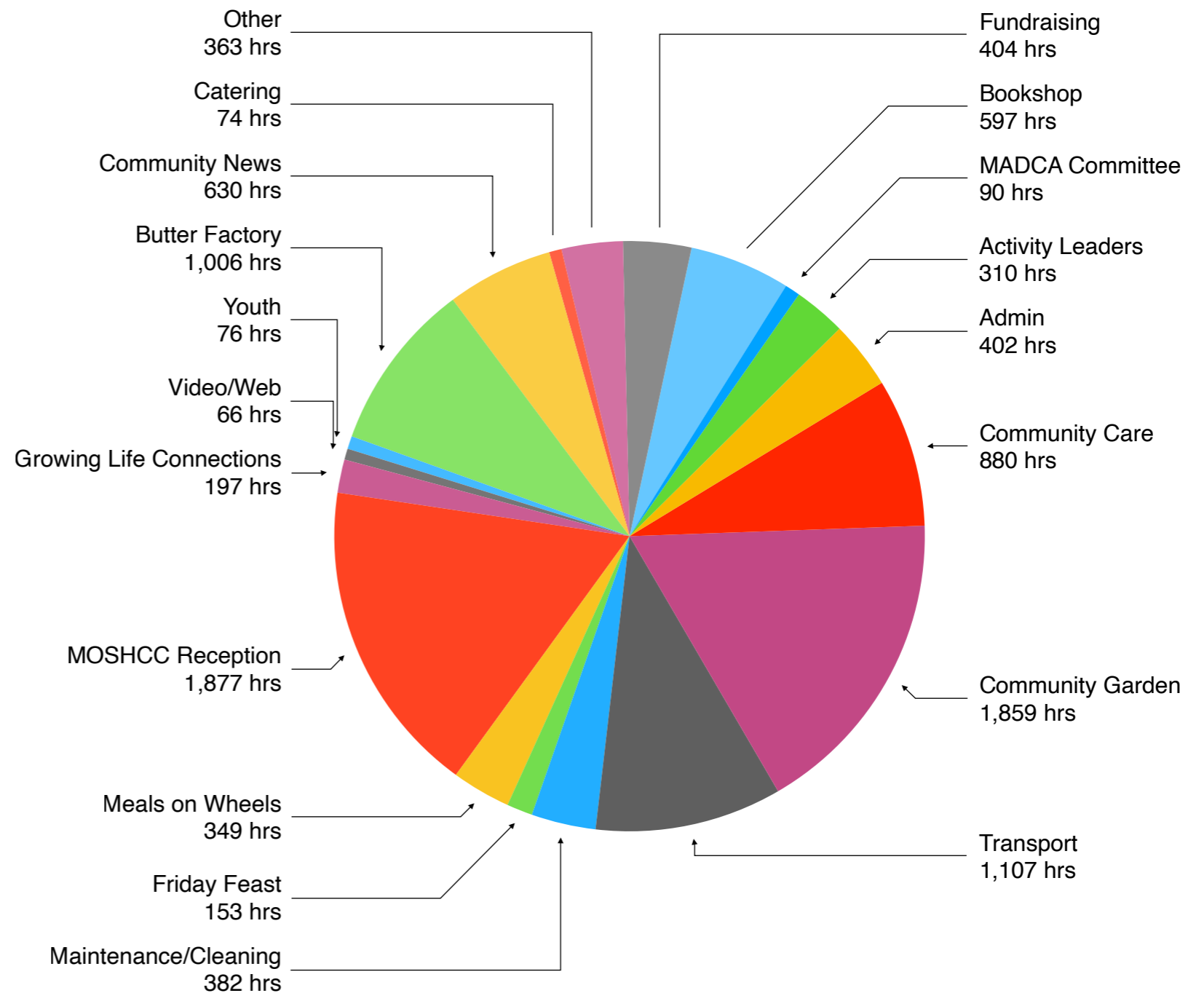


VOLUNTEERS

Our organisation runs on the work of over 100 currently registered volunteers across all our programs.

This is a snapshot of the work put in by our volunteers. On record our volunteers put in 10,819 hours to the overall work of MADCA this year.

We thank all our volunteers for their commitment and their passion for the Community



LAKES HOME CARE

Annie Whyte

As we close off another chapter and move into the 2023-2024 financial year, I would like to thank all those who worked tirelessly throughout the past financial year; we couldn't have been as successful without all your input and dedication to your work.

Lakes Home Care continues to go from strength to strength; we welcome another RN into the fold Cathy McKenny who is helping us shape things for future in-home care.

We started the last financial year off with 48 Home care packages. We ended this financial year with 74 Home Care Packages, 136 Commonwealth Home Support consumers, and 11 NDIS, with Brokerage clients sitting at around 4.

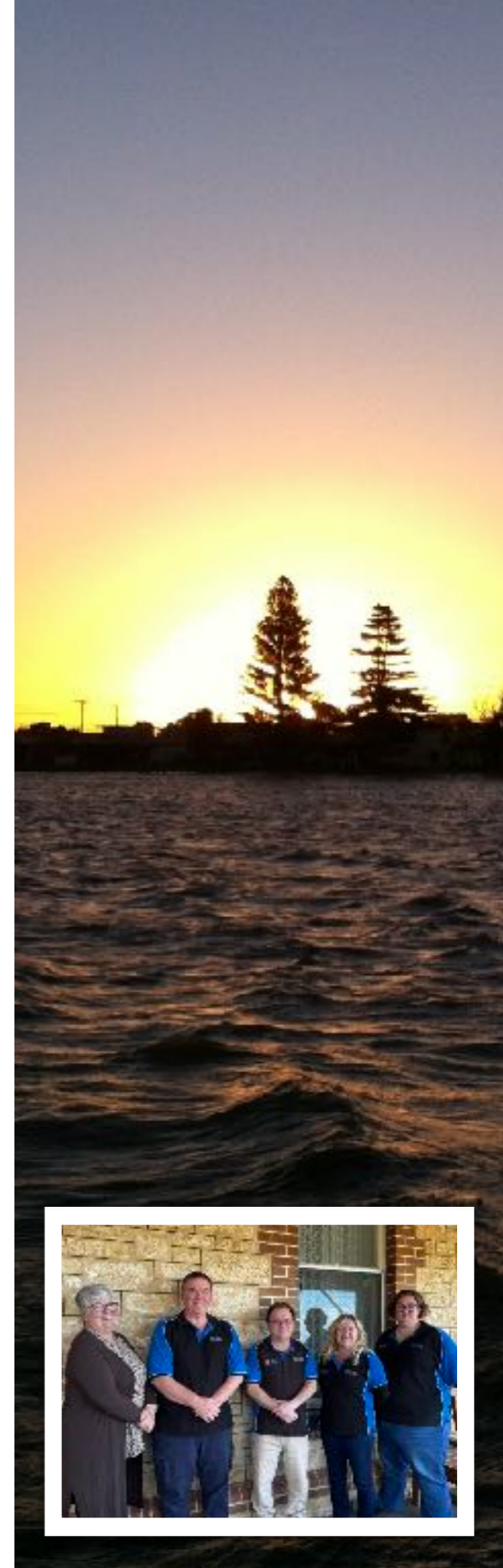
This is an increased client base of 25%, which has enabled us now to employ more staff from within the community and surrounding districts which are just amazing.

We still have five current Cert IV traineeships, with four more coming on board at this financial year's commencement.

The support provided to our consumers has been truly amazing, and we have had some wonderful feedback because of the care and support we provide them.

We look forward to further growth within our team and taking on the new challenges within the Home Care Industry as we work towards significant changes in the future as the Commonwealth develops a new Home and Community Care program as we approach 2025.

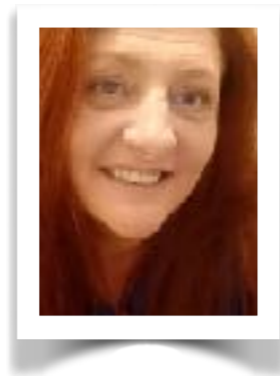
We look forward to transitioning our office into the newly restored Cottage at the Butter Factory, where we can further spread our wings. We have outgrown our space in the Community Centre and will take up residence at the Cottage once the restoration is completed later this year.



VOLUNTEERS

Vivienne Maher

As I reflect upon the past year, I am filled with a sense of gratitude and inspiration that only comes from being part of such a beautiful community.



Here at Milang Old School House Community Centre (MOSHCC) we really have an amazing community center, Over the course of the last year, I have had the incredible opportunity to witness the impact of our collective efforts and the power of genuine human connection. Every conversation, every smile exchanged, and every shared experience has reinforced the significance of the work we do here at MOSHCC.

Through our commitment to fostering a sense of belonging and engagement, we have not only built bridges within our community but also forged lasting friendships.

As your Volunteer Coordinator, I have been fortunate to engage with each of you and to witness firsthand the positive transformations that unfold when individuals come together with a common purpose. The stories I've heard, the experiences I've

shared, and the relationships I've formed have left a lasting impact on my journey here.

As we gather for this year's AGM, I am humbled by the dedication of our 70 + Volunteers who have contributed an astonishing 10.995 hours of their time and energy.

Your unwavering support is a testament to the strength of our community and the shared vision that we all share.

Looking back, I am proud of all that we have achieved together. Looking forward, I am filled with anticipation for the conversations that await us in the coming year. Each connection holds the potential to shape not only our organisation but also the lives of the community members that we touch.

In the past year, at MOSHCC we have experienced an exceptional level of dedication and support from our volunteers. We are incredibly grateful for the 70 + individuals who



generously contributed a combined total of 10.995 hours of their time and effort since our last AGM.

These volunteers have been the heartbeat of our organisation, tirelessly working across various initiatives and programs. Their commitment and enthusiasm have been instrumental in achieving our goals and fostering a strong sense of community engagement. Whether it's helping to organise events, delivering Meals on Wheels, or working in the community garden, our volunteers have made a lasting impact on the Milang Community.

We are proud to share stories of how our volunteers have positively touched the lives of community members. From providing a helping hand to those in need, driving people to medical appointments, to creating a welcoming environment at our front desk. Their dedication has created a ripple effect of positivity that resonates throughout Milang and the surrounding towns.

Looking ahead, MOSHCC is poised to build upon the successes of our past years and further enrich the lives of our community members. We have learned a great deal and engaged in countless amazing conversations that have deepened our understanding of

the needs of our community.

The coming year holds promise for the introduction of new programs, events, and initiatives that reflect the

insights gained from these conversations.

Our Volunteers, who have been the backbone of our organisation, we would not be what we are today without them. For this I thank you, your dedication has been truly heartwarming.

In 2024, we look forward to expanding our reach, deepening our impact, and creating even more opportunities for members of our community to come together, learn from one another, and contribute to the collective well-being.

Thank you for being part of our journey, and we eagerly anticipate the enriching conversations and transformative experiences that lie ahead.



EMERGENCY RELIEF

3 times a week myself and a small group of volunteers collect donated food from local food places, such as Woolworths in Strathalbyn. In times of uncertainty and need, it is the kindness and generosity of organisations like Woolworths that shine as beacons of hope. Their commitment to reducing food waste while simultaneously helping those facing food insecurity is a testament to the amazing community we live in. This food has been a lifeline for many individuals and families.

One of the heartwarming initiatives Woolworths has embraced is the provision of a permanent collection point at the front of their store. This simple yet impactful gesture allows customers to contribute items they've purchased, directly benefiting those who rely on these donations. This food is shared between 3 organisations, MOSHCC, Strathalbyn Pantry Club, and Strathalbyn Neighbourhood Centre. Week after week the spirit of community in Strathalbyn shines ever brighter. The impact of this collaboration is immeasurable. It's not just about providing nourishment; it's about forging connections, building bridges, and demonstrating the power of community. The kindness of Woolworths and the dedication of our volunteers exemplify the incredible community we live in, one that supports each other through thick and thin. I would like to send a massive thank you to everyone who has donated items, to the volunteers who collected the food, and to Woolworths for supporting our local people.

Vivienne Maher



CHILD CARE

Britteny Fleming, Cathy Ward & Kym Ingram

Our creche service caters for children aged 6 months to 5 years. We are open from 9:30am to 12:30pm Mondays and Wednesdays during the school terms. We are closed on public holidays. There is a limit of 10 children per session.

Fees Our daily fee is \$10.00 per session before the Child Care Subsidy (CCS) has been applied. Child Care Subsidy offers assistance to families to help with the cost of child care.

A big thank you to Rosemary Evans for all her time and support over the years with the children at our service. Rosemary was an integral part of the creche, fantastic with the children, very creative, caring, calm, and extremely hard working. We could like to say a BIG happy retirement to Rosemary and all the best for the future.

We would also like to welcome our new staff, Cathy Ward and Kym Ingram to our creche team this year.

They are helping to support Britteny Fleming in her role. Our staff work very well together and bring a variety of different skill set and qualities to the team.

All Educators have a current Working with Children Check, First Aid Certificate and Responding to Abuse and Neglect Training. We are here to support your children through their early learning Journey. We offer play-based learning activities and provide a Milang Creche Journey Folder at the end of their time with us. The folder allows us to share with families their children's growth and development that they have accomplished while at the creche.

Last but not least we would like to welcome all the new children and their families. And to anyone wanting to know more, simply give us a call or drop in and one of our friendly staff will be more than happy to help. Looking forward to another year in the Milang Community.



MILANG COMMUNITY GARDEN

The Milang Community Garden is situated in the old part of the town opposite the school and is on Crown land, currently under the Education department. It is an old, well-established garden with a large mature orchard of 45 trees, approximately 40 beds, a hothouse tunnel, shade house area and large composting area. The purpose of the Community Garden is to provide a relaxed environment for local residents to come together to work whilst enjoying gardening and social the interaction with like-minded people. It is currently managed and maintained by passionate and dedicated volunteer gardeners who work together to share, contribute and donate their skills, knowledge, time and funds, to produce a wide variety of fruit and vegetables and an attractive environment for the birds and other wildlife that inhabit the area. The produce is shared amongst the gardeners with excess sold via donation to the local public.

The garden is supported by MOSHCC who provide volunteer registration, insurance and occasional large expenses via grant applications.

Membership



Membership has remained relatively stable after an influx of new members last year, dropping slightly from 18 to currently 15 regular volunteers.

Our volunteers have a wide range of skills and knowledge which they bring to the garden, providing diversity and interest.

Garden Management and Infrastructure

All the garden beds are consistently rejuvenated and replanted with new crops as the seasons change. It is a busy, happy place, always with much to do!

The irrigation system provides efficient watering to the garden. Our gardeners continue to monitor the system, upgrading it to service any new beds or plantings.

Produce

The unusually cold and wet season has slowed the growth of many of our plantings, so the produce has been down across all areas, including the fruit crop. We look forward to more vegetables in the coming months. Preparation for a long hot dry Summer is already in place, as the season changes.

Finance

The ongoing maintenance expenses for the garden and morning teas are paid for by the member's monthly fee and donations from public sales. This varies with the season but funds have remained viable throughout the year.



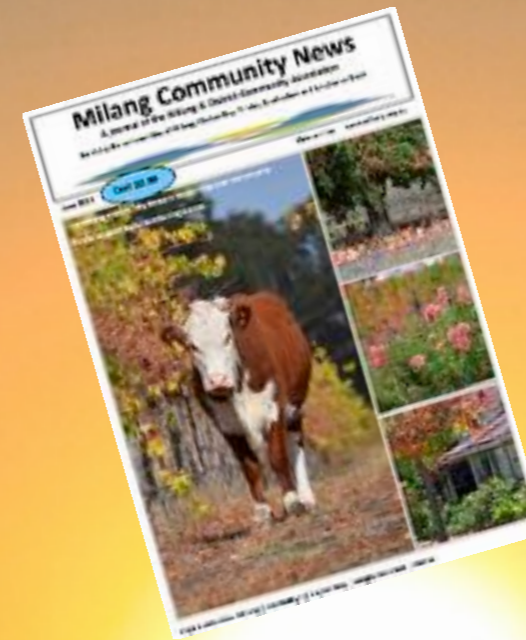
COMMUNITY NEWS

Cathy Fish - Editor

As the Editor of the Milang Community News I am always amazed by the sheer volume of wonderful events that occur in this region and the amazing number of volunteers who so selflessly donate their time to making them a success.

I take great pride each month in collating and editing the stories and rely very much on my regular contributors to update me with what's been going on. Sometimes I start the month with a blank template and wonder what on earth I will be filling it with.

The Milang Community News is a journal of Milang and the surrounding areas and is an important record of what has been happening including the progress of the Butter Factory restoration, fundraising activities, what's happening at the various community clubs and also valuable historical Butter Factory and Cemetery articles.



TREASURER'S REPORT

Mike Linscott

The last financial year has been one of growth and development in several quarters. Lakes Home Care has been a major provider for the financial support of the Association. There is no doubt that the service provides a much-needed support to the Milang rand District community. We have gone, in the last few years, from 12 clients, when we first started to over 70 this year. The resulting income from this has led to a surplus which has been able to bolster the number of other activities undertaken by the Association during the year.

The administration of Lakes Home Care has not been without difficulties.

The operation of Lakes Home Care service is currently funded monthly by the Association. On completion of the month's financial expenditures, we make a submission to the Commonwealth Government for reimbursement of our expenses.

This delays payment up to four weeks after the completion of the month. This means that we must fund the next month operation from our reserves. Fortunately, we can do this, and we have managed the situation successfully.

The Government is indicating there will be changes to In-Home Aged Care services in the coming financial year, we are yet to see any details related to this.

Butter Factory

The work on the Butter Factory continues apace and we are looking for a completion date towards the end of September this year. This will be very much dependent on raising additional funds to fit out of the centre including the cottage and the commercial kitchen. The toilets and work on the cottage are well in advance and we are looking forward to meeting the target.



We are still discussing uses for the completed facility and suggestions have been made and are many and varied so there is no doubt, but it will be a major facility and support the Milang Community. Our job is to make sure that it is financially viable and a support to the community.

We will continue to run several community activities which are mainly self-funding, we also offer support in various forms to the community.

In general, it has been a good financial year, with growth factors and an increase in service to the community. I look forward to this continuing and I would like to take this opportunity to thank the staff at MOSHCC who have worked hard and diligently to maintain the service and keep the records. I particularly wish to thank Stuart Jones and Annie Whyte for their hard work.

I would also like to thank Lyn Unwin and team for their great work in running the "Already Read Books" Shop at the Butter Factory and Norm and Glenis Foster for all their work in organising Concerts.

Mike Linscott

Treasurer

Our projects are

**SUPPORTED
BY...**

We thank all our funding bodies for the support they give to local projects and programs through MADCA



Alexandrina Council

Eastern Fleurieu School, Milang Campus

Woolworths, Strathalbyn (food donations)

SA Department for Innovation and Skills

SA Department for Human Services

SA Department for Environment and Water

**Australian Government Department of Education
Skills and Employment**

Australian Government Department of Health

Australian Government Department of Agriculture

**Australian Government Department of Social
Services**